



KCompute Winning™ Brokerage Suite

Winning™ Trade (WiT)
Winning™ Risk Management



- *it starts here* -

The Vision

“Provide **competitive** advantage to our clients through the implementation of our business enterprise information systems and customized software solutions.”

WinningTrade™ (WiT)

“WinningTrade™ is all about performance, reliability and safety.”

“It gives you an online trading system, which allows the brokers and customers (in-house) to trade directly on the Stock Exchange. All trades entered by authorized users are first sent to Pre-Trade Risk Management System for verification and then forwarded to respective Exchange Gateway.”

“Bird’s eye view” of Sub-Systems

- Trading Clients
 - Accessible from Home, Branch, Mobile, PDA, SMS, Web
- Trade Servers
 - Client Authentication
 - Risk Management
 - Trading Engine
 - Data Providers
- Management Systems
 - Manage Branches and Clients
 - Manage Trade Permissions and Limits
 - Trade and Exposure Monitoring
 - Event Viewer

Trading Client Systems

Home Edition

- Best for Home/Remote location
- Direct connection with server via Dialup/DSL/WiMax/GPRS/EDGE
- Requires Microsoft® Windows™ based PCs

Corporate Edition

- Best for Corporate Branches
- Connectivity via Winning Trade Branch Server through LAN
- Requires Microsoft® Windows™ based PCs

Mobile Edition

- Connectivity via WiMax/GPRS/EDGE
- Available for Windows™ and Symbian series 40 and above based devices

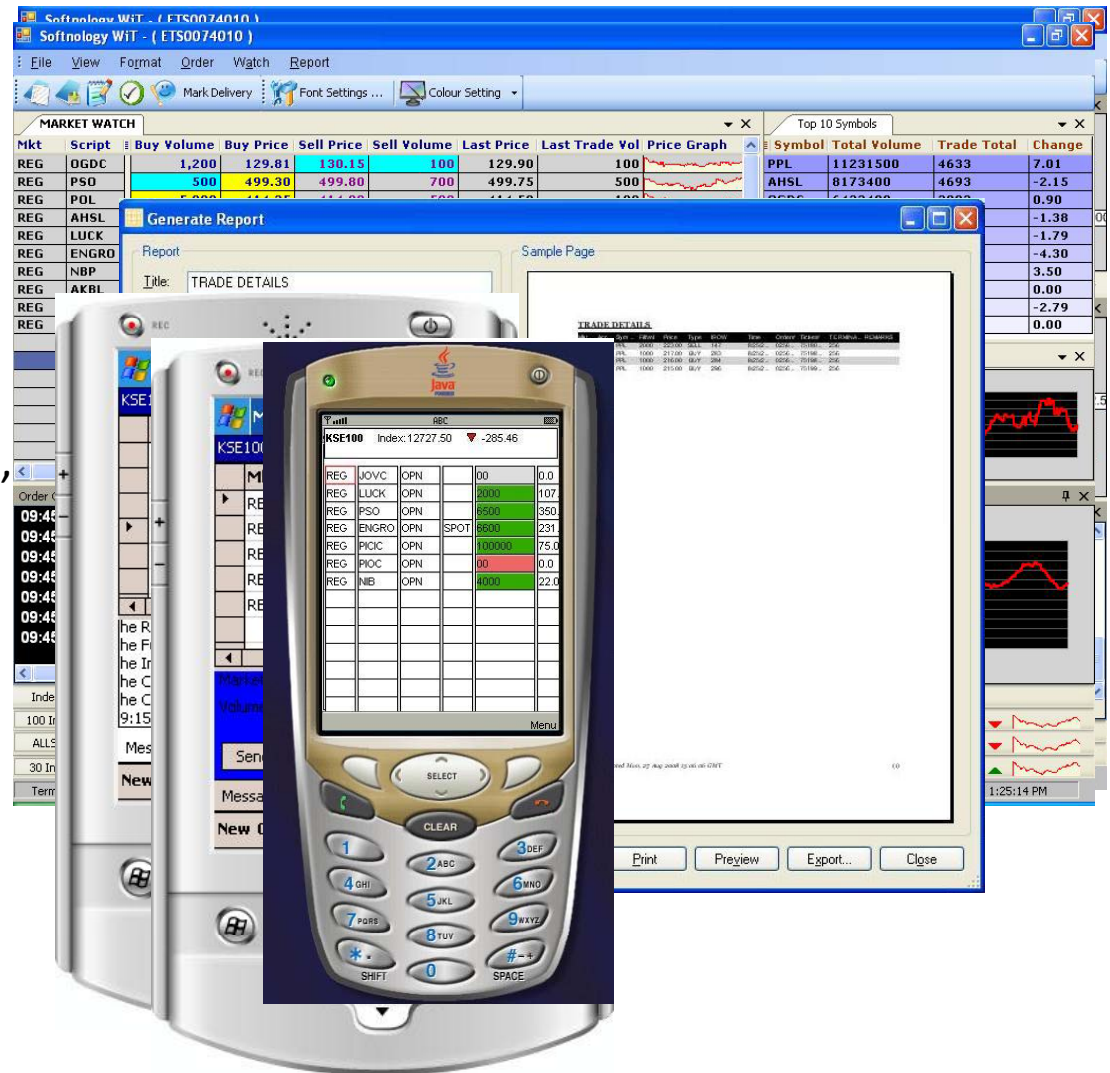
SMS Gateway

- Waits for SMS commands
- Allows Trades and Customer Balance Inquiries

Trading Client Systems

Salient Features

- Highly efficient updates
- Extreme Fast Communication
- Powerful Reporting Tool
- Live Graphs
- Sort & Customize Market View
- Change each window to Resize, Dock and Auto-Hide
- Accessible via Mobile, Smartphones & PDAs devices



Trade Server Systems

WiT Authentication Server

- Client, Agent and Terminal binding and authentication
- Logs Client Connection Information
- Manage load and redirects client to least utilized server

WiT Trade Engine

- Allows Trading on Multiple Trade Gateways

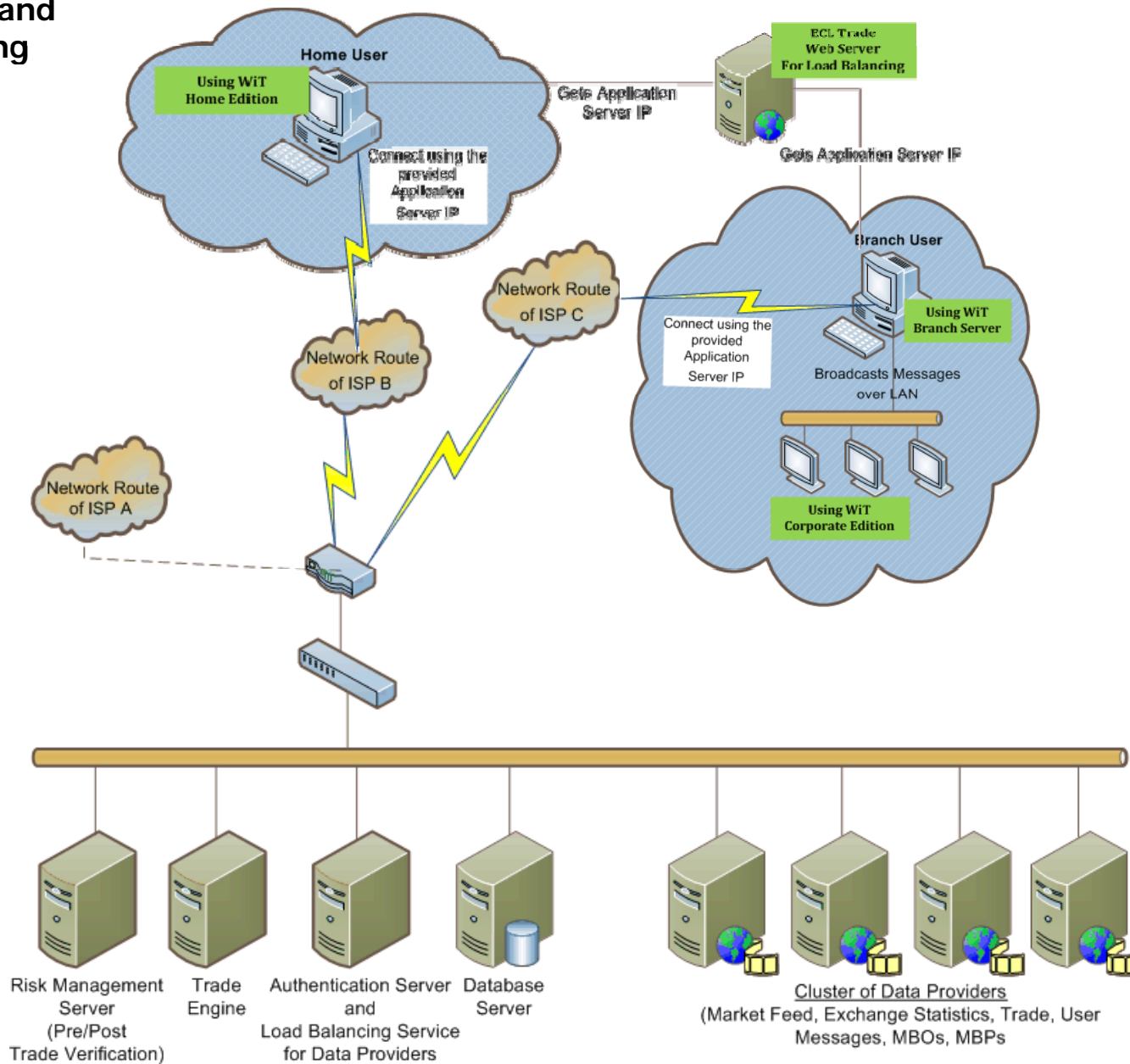
WiT Risk Management Server

- Manage Exposure and Trades from Multiple Gateways
- Manages both Active and Passive Gateways

WiT Data Providers

- For Market Feed, Exchange Statistics, Trade and User Messages, MBOs and MBPs
- Monitor Connected Clients
- Monitor Messages Sent and Received from Clients

Connectivity and Load Balancing



Management Systems

Manage Branches and Clients

- Monitor and Manage Connected Clients
- Bind Clients with Terminals, Agents and Branches

Manage Trade Permissions and Limits

- Client Trading Limits and Ledger Balances in real time
- Commodity/Scrip wise permissions
- Allow/Disallow/Suspend Trading

Trade and Exposure Monitoring

- View live Client Exposure, Trading Limit and Ledgers Balances
- View Holdings and its Valuation in real time
- View live Trades and Exposure of Client, Agent and Branches

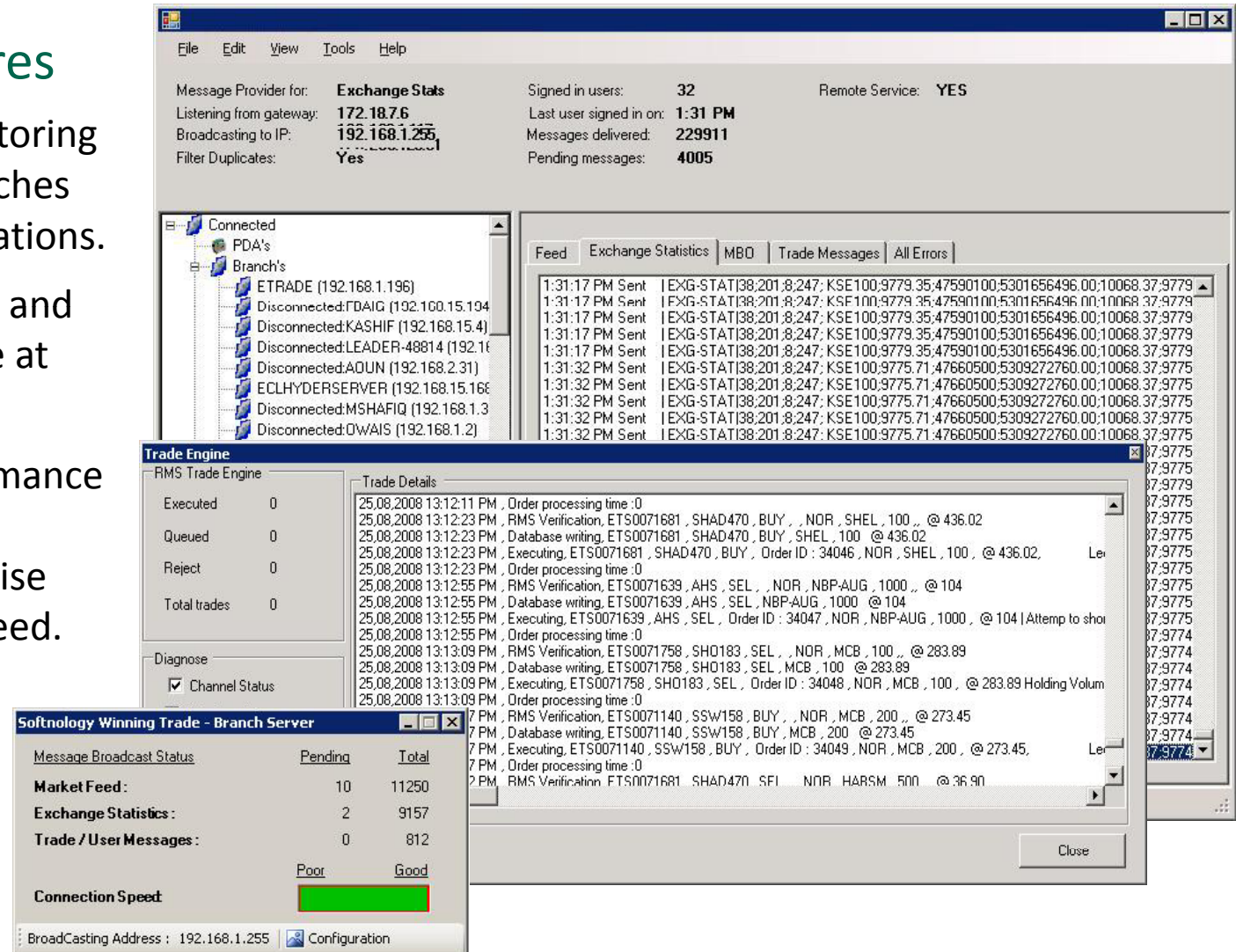
Event Viewer

- Track error and system messages generated by various services
- Troubleshoot errors with detailed error logs and cause of error

Management Systems

Salient Features

- Real-time monitoring of Clients, Branches and Communications.
- Track Messages and its performance at every stage
- Monitor performance of network and client/branch wise connectivity speed.



The screenshot displays the 'Softnology Winning Trade - Branch Server' application with several active windows:

- Main Window:** Shows system status including 'Message Provider for: Exchange Stats', 'Listening from gateway: 172.18.7.6', 'Broadcasting to IP: 192.168.1.255', and 'Filter Duplicates: Yes'. It also displays 'Signed in users: 32', 'Last user signed in on: 1:31 PM', 'Messages delivered: 229911', and 'Pending messages: 4005'.
- Connected Branches:** A tree view showing connected branches like 'ETRADE (192.168.1.196)' and disconnected ones like 'Disconnected: PDA's'.
- Trade Engine:** A window showing 'RMS Trade Engine' statistics (Executed, Queued, Reject, Total trades) and 'Trade Details' with a log of trade events including order processing, RMS verification, and database writing.
- Softnology Winning Trade - Branch Server (Bottom):** A summary window showing 'Message Broadcast Status' (Pending: 10, Total: 11250), 'Exchange Statistics' (2, 9157), 'Trade / User Messages' (0, 812), and 'Connection Speed' (Poor/Good indicator).

KCompute Winning Trade

Sub-System Deployment

Products	Deployed On	Implementation Time
<u>Online Trading System</u> <ul style="list-style-type: none"> • Authentication Server • Trading Engine • Risk Management Server • Data Providers • Branch Gateway Server • Trading Terminal (Home/Corporate Edition) 	Headoffice Branches Home Users	4 Weeks Integration 2 Weeks Completion
<u>Mobile Trading</u> <ul style="list-style-type: none"> • Windows PDA • Symbian based Smartphone/Mobile 	Mobile Users	Requires Online Trading System 2 Weeks
SMS Trading	Mobile Users	Requires Online Trading System 1 Week
SMS Trade Confirmations	Mobile Users	2 Week Integration 1 Week Completion
<u>Management Systems</u> <ul style="list-style-type: none"> • Manage Branches and Clients • Manage Trade Permissions • Risk Monitor • Event Viewer 	Headoffice Management / Risk Managers	2 Weeks Integration 1 Week Completion



Thank You

Winning™ Trade will be a Winning Partnership.

Contact:

KCompute (Private) Limited.

<http://www.KCompute.com>

Contact Person: Shahbaz Ahmer

Email Address: shahbaz@KCompute.com